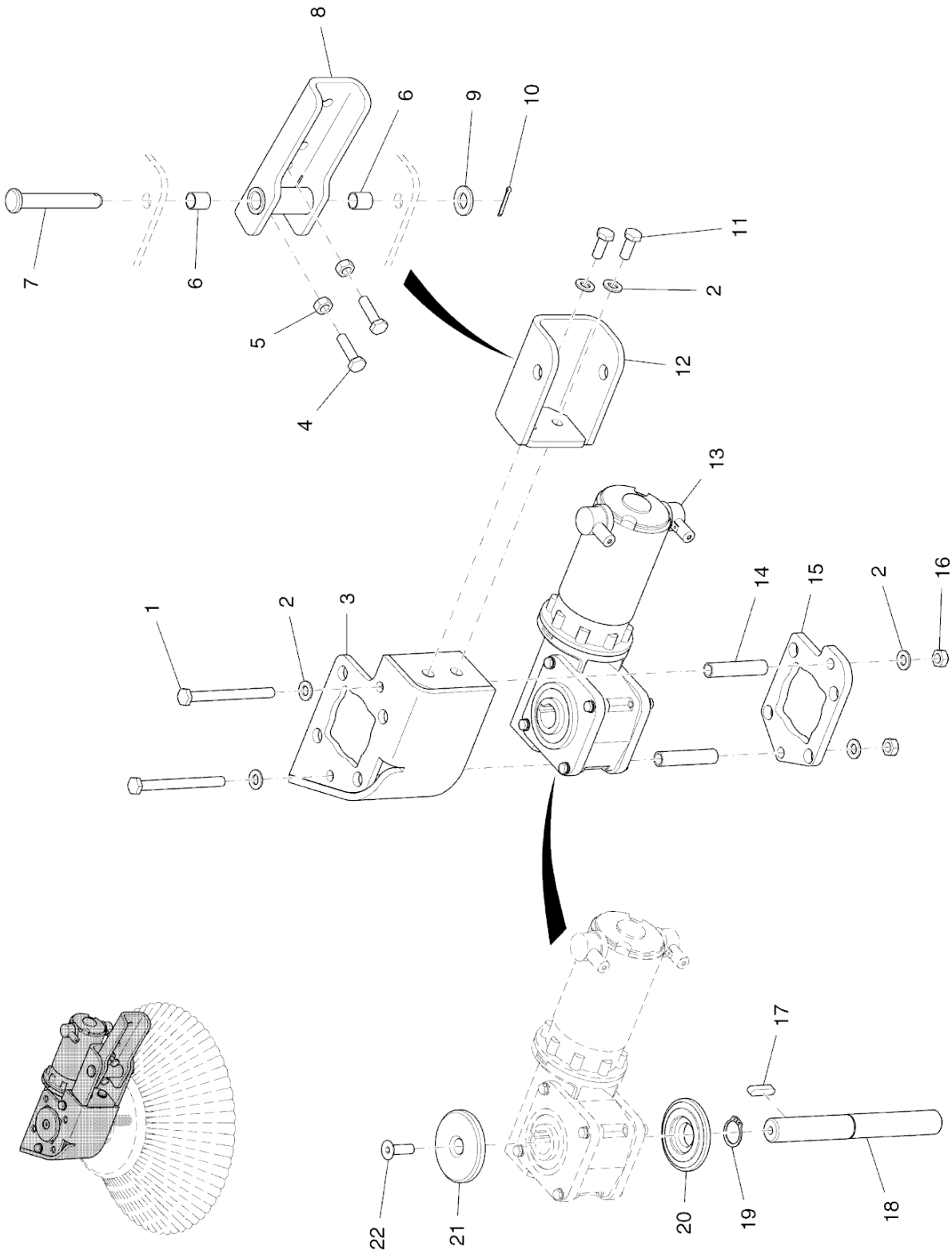


Side broom motor L.H. (97110308-01)



| Pos. | Part No. | Material number | Description | Qty. | Remarks |
|------|------------|-----------------|-----------------------|------|---------|
| 1 | 00746390 | 11039062 | Hex.bolt | 2 | |
| 2 | 00053750 | 12310041 | Washer | 6 | |
| 3 | XXXXXXXXXX | | no part-No. til yet | 1 | |
| 4 | 00053110 | 11038254 | Hexagon screw | 2 | |
| 5 | 00053350 | 12022059 | Hex. Nut | 2 | |
| 6 | 00077900 | 14896021 | DU-Drying socket | 2 | |
| 7 | 00879630 | 13328422 | Bolt | 1 | |
| 8 | 01178690 | 96128426 | Retainer | 1 | |
| 9 | 00053770 | 12310066 | Washer | 1 | |
| 10 | 00553580 | 13280136 | Cotter pin | 1 | |
| 11 | 00053090 | 11038213 | Hexagon screw | 2 | |
| 12 | XXXXXXXXXX | | no part-No. til yet | 1 | |
| 13 | 01057330 | 90396029 | Engine with gear unit | 1 | |
| 14 | 01057440 | 90395898 | Spacer piece | 2 | |
| 15 | 01057400 | 90373432 | Plate | 1 | |
| 16 | 00051510 | 12040051 | Hex. Nut | 2 | |
| 17 | 00153010 | 13540125 | Feather key | 1 | |
| 18 | 01057410 | 90373499 | Shaft | 1 | |
| 19 | 00054310 | 12610093 | Retaining ring | 1 | |
| 20 | 01057420 | 90393679 | Cover | 1 | |
| 21 | 01057430 | 90393687 | Dust cover | 1 | |
| 22 | 00136350 | 11225026 | Countersunk screw | 1 | |